

Your home is with us... Call today for an Appointment (215) 348-5500

mmcrent.com

Doylestown Meadows

**METROPOLITAN
MANAGEMENT
COMMUNITIES**



QUICK FACTS

303 W. State Street
Doylestown, PA

One Bedroom: from \$1,105

Two Bedroom: from \$1,315

Three Bedroom: \$1,470

*Includes: Heat, Hot Water & Cooking Gas**

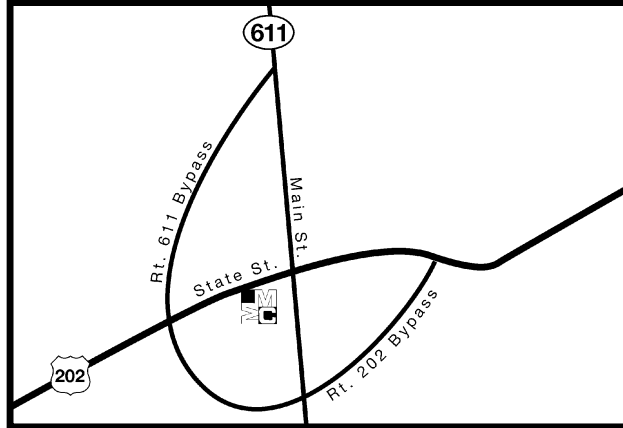
**Utility surcharge may apply*

Enjoy 10 beautifully landscaped acres in Doylestown. Conveniently located to shopping, restaurants, nightlife and theatres.

Close to the R5 train line to Center City Philadelphia or bus service to New York City.



Directions to Doylestown Meadows – Doylestown, PA

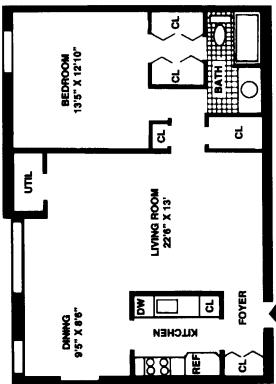


From King of Prussia

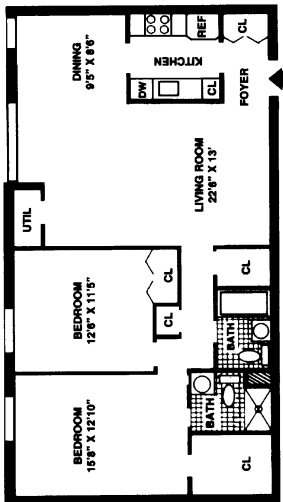
Take PA Turnpike (276) to the Willow Grove/Doylestown Exit to North 611. Follow 611 North to 611 Bypass. Take 611 Bypass to Route 202 South. Exit onto 202 South. Pass Doylestown Hospital. Community is on the left.

- Swim Club & Fitness Center
- NEW designer kitchens
- Central air
- Spacious floorplans
- Wall to wall carpeting
- Walk-In closets
- Cats welcome
- Elevator buildings
- Laundry facilities
- Private off-street parking
- On-site maintenance
- 24-Hour Emergency Service

ONE BEDROOM



TWO BEDROOM



TWO BEDROOM CORNER

